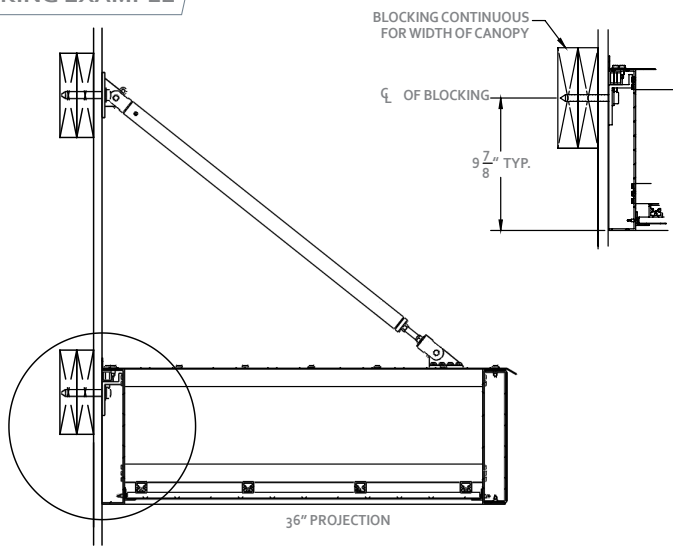




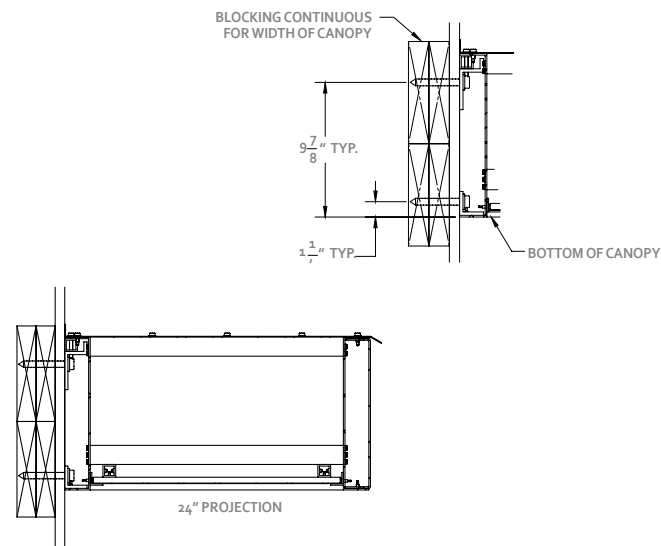
COLORADO

The Colorado system is intended to provide protective covering from sun or rain and is a canopy system with a soffit paneled bottom that can accept can lights. These canopies are built from a commercial grade aluminum extrusion with hidden fasteners. Choose between multiple face options, baked enamel powder coated finished (AAMA 2604) or a Kynar finish (AAMA 2605) to accent your building and overall brand. Standard tie back supports are 1-1/2" diameter and heavy-duty rods are available upon request. **Made in the U.S.A.**

BLOCKING EXAMPLE



BLOCKING FOR CANOPIES WITH TIE BACKS



BLOCKING FOR CANOPIES WITHOUT TIE BACKS

STANDARD SIZES

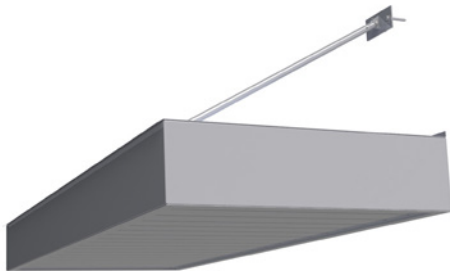
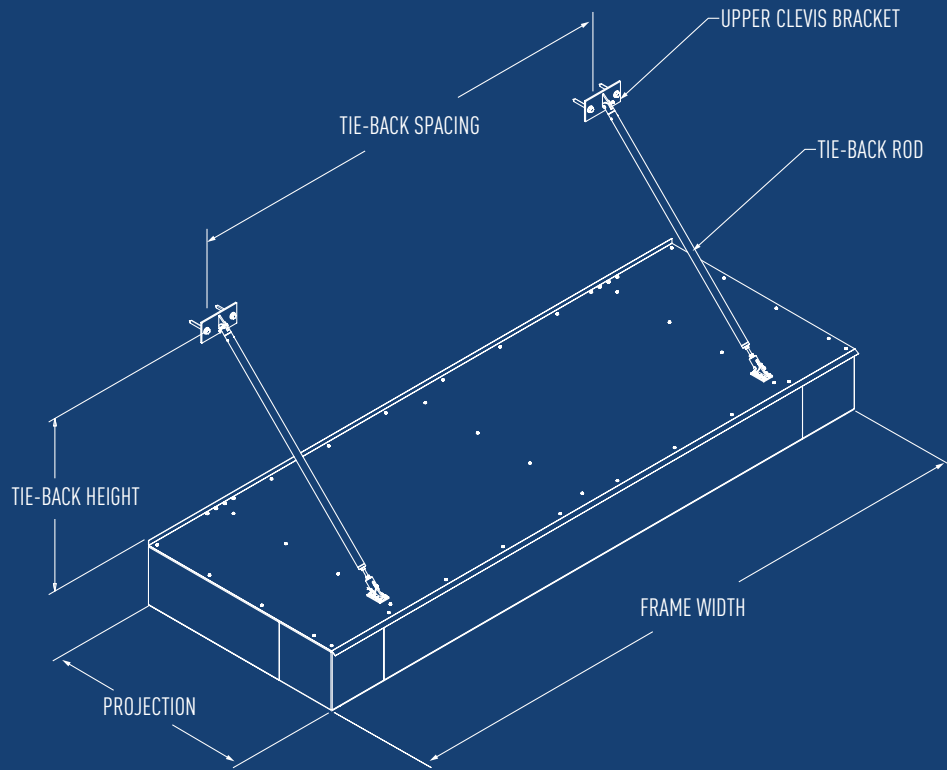
- Projection: up to 6'
- Frame Width: 48" - 176"
- Tie-Back Spacing: 88"
- Tie-Back Height: Flexible
- Tie-Back Rod: \varnothing 1 1/4"
- Upper Clevis Bracket: 8" Wide

CUSTOM SIZES

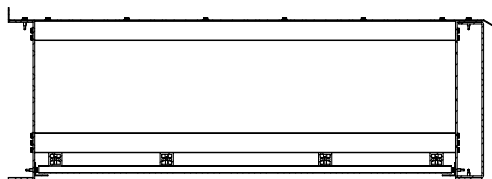
Projections that are greater than 6' are available, but will require additional engineering and fall outside our standard pricing models.

HIGH WIND/SNOW LOAD

- Tie-Back Rod: \varnothing 1 1/2"
- Upper Clevis Bracket: 10" Wide

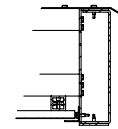


COLORADO CONFIGURATION

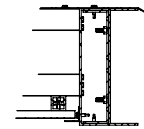


BASIC COLORADO DESIGN

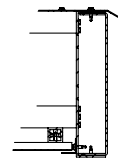
FACE OPTIONS



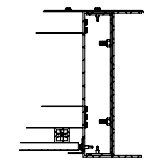
8" Flat (Standard)



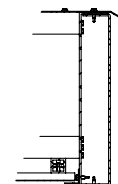
8" Open



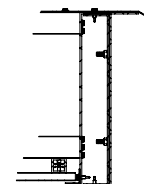
10" Flat



10" Open



12" Flat



12" Open

Custom faces available upon request.