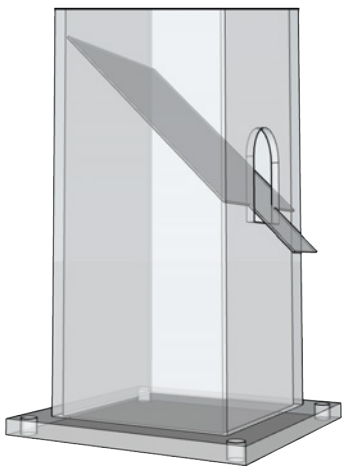


SAVANNAH

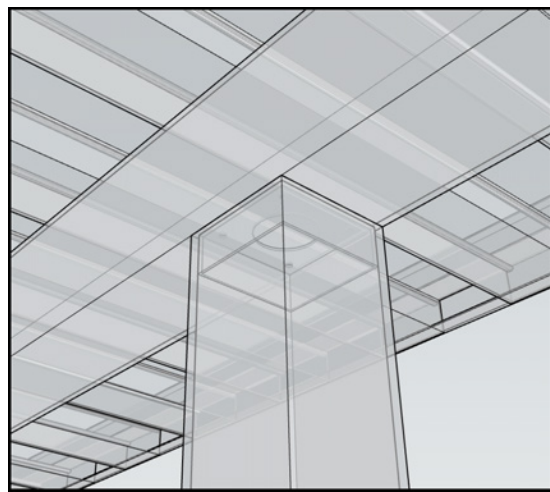
Our NEW Savannah Walkway Cover is available in three styles; Flat Top, Cantilevered and Gabled Top. All three styles have integrated gutter with water draining through the posts. Post and beams have a powder coated finish (Kynar available) and the tops come with an anodized finished (limited colors). With a maximum span of 12 feet between posts and beams, integrated water management and rust-free all-aluminum construction, the Savannah Walkway is the best way to keep walkways dry, shaded, and ice-free! **Made in the U.S.A.**

GUTTER DETAIL



POST GUTTER OUTLET

POST DETAIL



POST GUTTER DETAIL

STANDARD SIZES

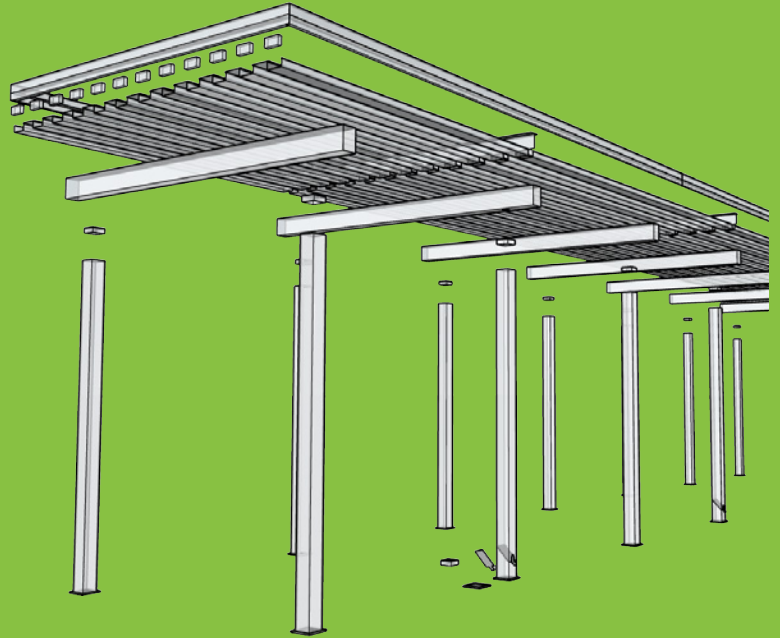
- Maximum 12' between Posts
- Maximum 12' between beams
- Gabled cladding 1" x 12" standing seam
- Posts 6" by 6" Aluminum Tube

WATER MANAGEMENT

With integrated gutters throughout and water diverted through the posts, walkways remain completely dry!

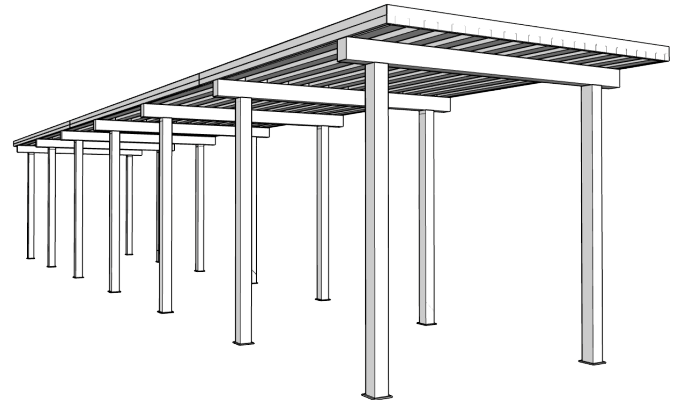
HIGH WIND/SNOW LOAD

- Withstand winds up to 175 mph
- Handles snow loads up to 30lbs/psf

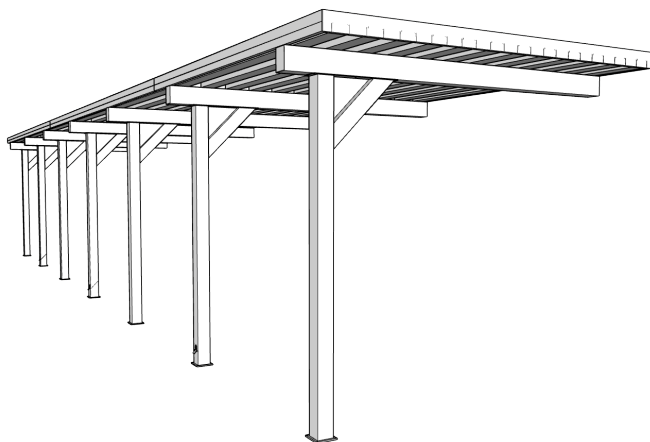


STYLE OPTIONS

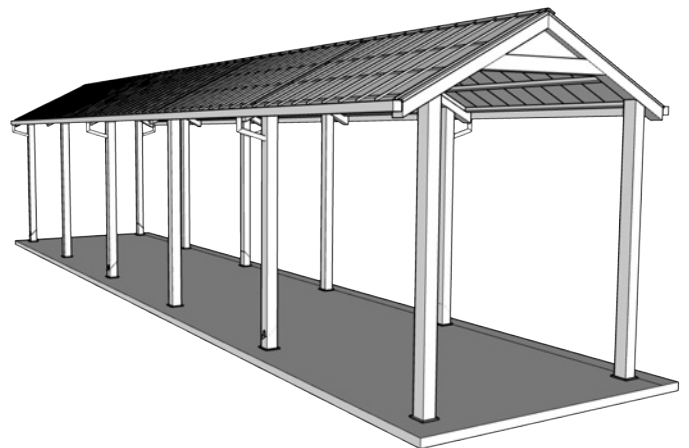
The Savannah Walkway cover comes in three standard styles; Cantilevered, Flat Top, and Gabled. For our account clients our design team can work with you to create a custom design to suit your needs (minimum volume required).



FLAT TOP STYLE



CANTILEVERED STYLE



GABLED STYLE